

PRODUCT SUBMITTAL

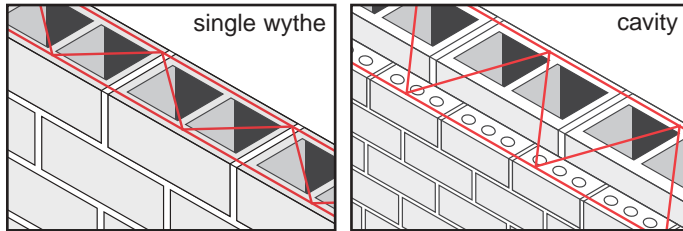


Truss Design

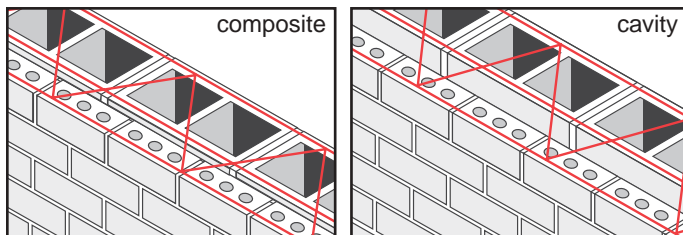
Description:

Truss Design is a prefabricated reinforcement for embedment in the horizontal mortar joints of masonry. Manufactured in 10-foot lengths from wire, it conforms to ASTM A 82 for cold drawn steel wire. It consists of two or more parallel and deformed longitudinal wires welded to a continuous diagonal cross wire at 16" O.C. Out-to-out spacing is approximately 2" less than the nominal thickness of the wall.

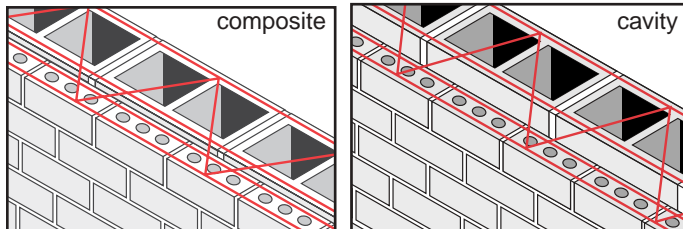
2 Wire System (Series 300)



3 Wire System (Series 300)



4 Wire System (Series 300)



Specifications:

All products conform to:

| | |
|---|--|
| ASTM A641 - (Mill galvanized wire) | ASTM A951-96 - (Masonry wall reinforcing) |
| ASTM A153 Class B2 - (Hot dipped after fabrication) | ASTM 580 Type 304 - (Stainless steel) |
| ASTM A 82 - (Cold drawn steel wire) | ACI/ASCE 530 - (Building code requirements for masonry structures) |

Wire Gauges:

| | Side Rods | Cross Rods |
|------------------|-------------------|------------|
| Standard | 9 Gauge (.148 in) | 9 Gauge |
| Medium | 8 Gauge (.162 in) | 9 Gauge |
| Heavy Duty | 3/16" (.187 in) | 9 Gauge |
| Extra Heavy Duty | 3/16" (.187 in) | 3/16" |

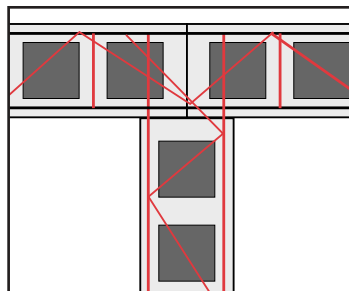
Finishes:

| | |
|---|--|
| Plain | Uncoated |
| Mill Galvanized | Zinc Coated (0.10 oz per sq ft) |
| Hot Dipped Galvanized After Fabrication | Zinc Coated ASTM A 153 Class B2(1.50 oz per sq ft) |
| Stainless Steel | ASTM 580 Type 304 |

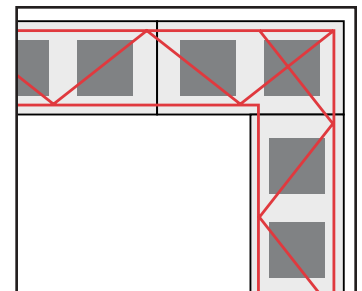
Class I ASTM A641 (0.4 oz/ft²) and Class III (0.8 oz/ft²) are no longer recommended by ASI 530 for interior walls. Epoxy coating is not recommended as a protected coating for joint reinforcement, anchors and ties. Manufacturer recommends Stainless Steel Type 304 for maximum corrosion protection.

Prefabricated Corners and Tees:

Truss Tee



Truss Corner



Approvals:

Comments:

Corporate Office
 400 Roundtree Rd
 PO Box 240988
 Charlotte, NC 28224
 704 525.5554
 800 849.6722
 Fax 704 525.3761

Memphis Plant
 2365 Harbor Ave.
 PO Box 13124
 Memphis, TN 38113
 901 775.9444
 800 441.8359
 Fax 901 775.9449

www.wirebond.com